



User manual



Ritter

Office

PPHU Ritter
ul. Rudzka 13B
44-244 Żory
Poland

karolina@ritter-polska.pl

Service

PPHU Ritter
ul. Mikołaja Reja 9
44-244 Żory
Poland

serwis@ritter-polska.pl



SCAN ME

Content

- 1. Technical Specifications 3
- 2. Unpacking, assembly and start-up 3
- 3. Rules of the game 6
- 4. Safety instruction 6
- 5. Warranty..... 8
- 6. Mainboard settings 11



1. Technical Specifications

Height	1100 mm
Width	1260 mm
Length	2520 mm
Weight	270 kg
Power	220-240 V
Power consumption	100 W

P.P.H.U. Ritter guarantees the proper operation of the device in accordance with the technical and operating data contained in the attached documentation and operating manual. The device is designed for two people. The machine was designed and built of the best materials and parts available on the market. The components of the device meet the required safety standards confirmed by the CE certificate. Warranty conditions are described in the next part of the manual.

2. Unpacking, assembly and start-up

Be especially careful when cutting the packaging with a knife or scissors.

Before starting the installation, be sure to read the safety instructions included in this manual. It is necessary to check the technical condition of electrical devices and installations (condition of insulation of wires and cables, plugs, switches, sockets), earthing, and the condition of fire protection. Check the technical condition of the current protections.

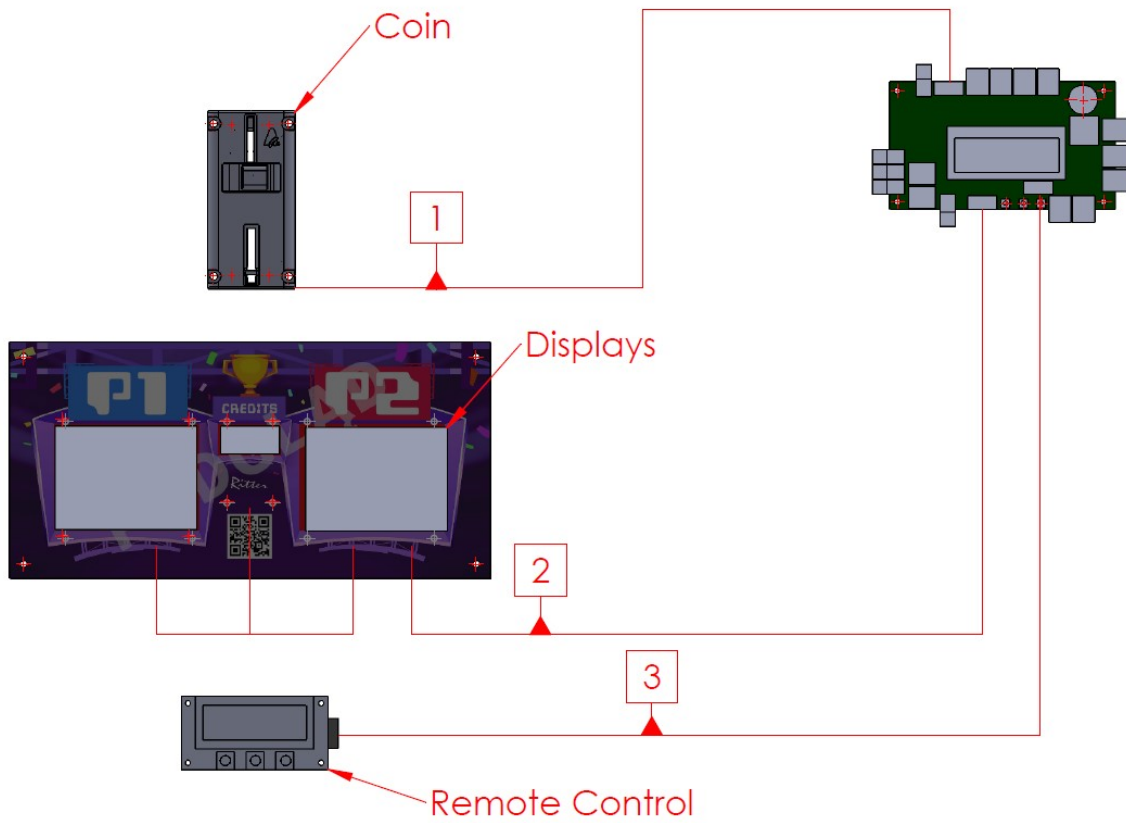
Most work accidents are caused by disregard or non-compliance with basic safety regulations. Accidents can be avoided by anticipating possible life-threatening situations and strictly following the safety procedures. Always make sure that the conditions and technical condition of the device allow for safe operation for the user and nearby third parties.

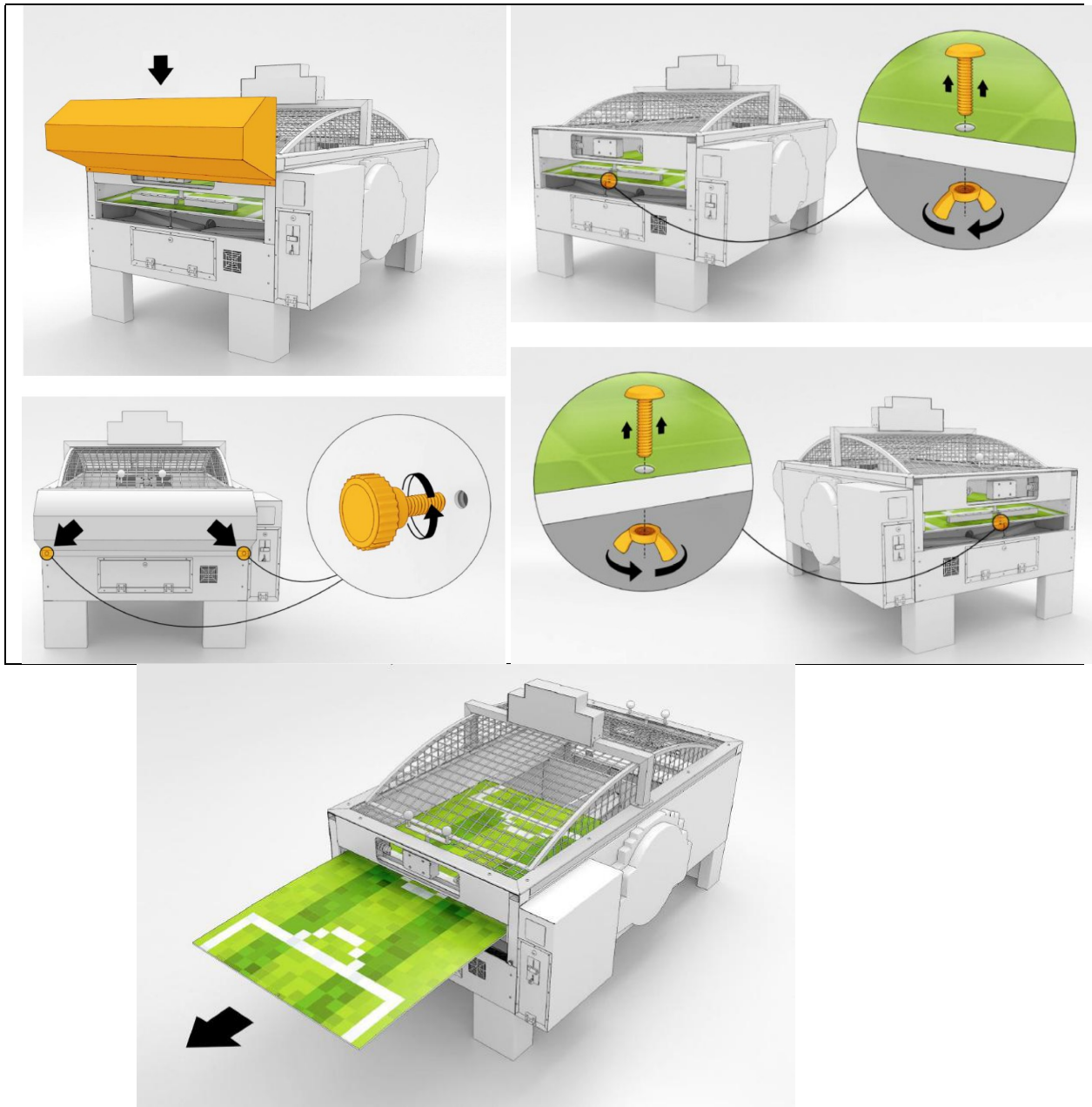
The table feet are height-adjustable, which enables the device to be leveled.



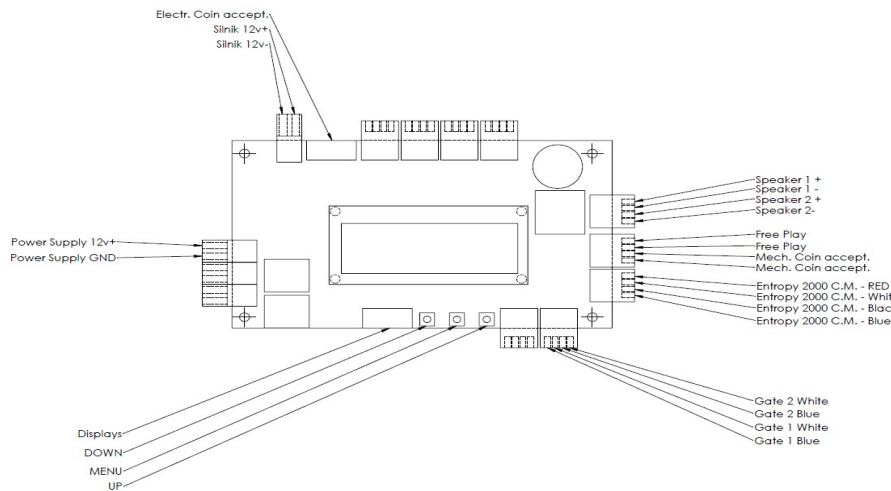


When transporting the packed machine, it is suggested that the device be secured by 2 people as shown in the picture.





To enter the MENU of mainboard - hold the middle button on the mainboard and then enter the code (0000) confirming with the middle button (page 11)



3. Rules of the game

The game consists in bouncing balls (flying out of holes) in order to place them in the opponent's goal. The bouncing devices are placed on opposite sides of the board. They have special handles (knobs) so that the user can freely use the device. After inserting the coin the game starts and the first ball is released. More than one ball may appear on the board. The displays above the playing field show the current number of goals scored by users. The game ends after the allotted time has elapsed.

4. Safety instruction

IMPORTANT!

- Never use the device for purposes other than those described in the operating instructions.
- Do not run the device without guards or other incomplete parts. High voltage can cause electric shock.
- Some parts may cause burns.
- DO NOT place the machine on uneven or sloping locations.
- Check wires and cables regularly.
- Protect the cables from rodent damage.
- Do not expose the machine to direct sunlight.
- The device is intended for outdoor use under a cover (roof, tarpaulin, etc.).
- Use devices only as intended.
- Any other use of the device is prohibited and may be dangerous. The manufacturer is not responsible for any damages or injuries caused by improper use of the equipment.
- The equipment has been manufactured with safety standards. Potential injury hazards have been ruled out.

To avoid injuries and / or accidents, follow these simple rules:

The safe and effective use of the device can only be ensured when it is maintained and used properly, as described in the manual.

- Regularly check that all bolts, nuts, handles etc. are securely fastened. The safety of the equipment can only be guaranteed if it is regularly inspected and tested.
- Always use the equipment for its intended purpose. If during use any part proves to be defective or makes disturbing sounds, stop using the device and have the device serviced. A damaged device must not be used.



- Replace any damaged parts immediately and do not use the equipment until it is repaired. You should also pay attention to possible material consumption. Safe use of the equipment can only be guaranteed if the wearing parts are regularly checked and carried out carefully.
- The table has an attached grating that protects users from being hit by game balls.
- Avoid high temperatures, humidity and contact with water.
- Place the equipment on a solid and even surface. Use floor protection under the machine. Place the appliance on a straight, stable and hard surface.
- **TRANSPORT:** Be especially careful when lifting and moving the device. A minimum of six people should always transport the device. Maintain proper posture when lifting or carrying equipment so as not to injure your spine. Do not turn the machine over and do not lift it with hooks or ropes.
- **ELECTRICAL NOTES:**

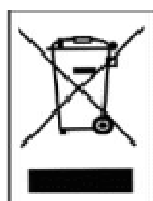


The hardware requires a proper power source to function. For your own safety as well as the safety of others, please make sure the power source is correct before turning on the device. Any source of power above or below the level can cause significant damage to the equipment and / or user.

This product must be earthed. If the machine fails, grounding provides a path of least resistance from electric current to reduce the risk of electric shock. This product is equipped with an earthed plug. The plug must be plugged into an appropriate outlet that is properly installed and grounded in accordance with all local codes and ordinances.

Incorrect connection of the equipment may result in a risk of electric shock. Check with a qualified electrician or serviceman if you are not sure that the appliance is properly grounded. Do not modify the plug provided with the product. If it does not fit the outlet, have a proper outlet installed by a qualified electrician. Make sure that the machine is connected to an outlet with the same plug configuration. Do not use an adapter for this product

- After use, this product cannot be disposed of as household waste, but must be taken to a collection point for used electrical and electronic equipment. The materials can be recycled according to their labeling.



**LET'S
GOAL!**

- Do not use while under the influence of drugs or alcohol.



1. Maintenance

ATTENTION !

The machine must be disconnected from the power source before carrying out any maintenance.

Maintenance

- Regularly check all parts of the device and the tightness of all screws and connections.
- Report any damaged parts to our service center for replacement. The equipment must not be used until it has been repaired.
The notification must be submitted in writing via e-mail or the WHATSAPP messenger / application linked to the service telephone number listed above.

Machine care

- For cleaning, use a damp cloth without harsh cleaning agents.
- We suggest cleaning the device regularly.
- When washing, pay special attention to places such as LED lighting, table top and bumper devices, which are held directly by users.
- Do not clean plastic parts with solvents.

5. Warranty

- The failure should be reported in writing via e-mail within 10 days from the date of detection of the failure
- Terms of warranty:
- The warranty period is 1 year from the date of sale, if the device was purchased by a customer who runs a business.
- The warranty period is 2 years from the date of sale, if the device was purchased by a customer who does not run a business
- The condition of the warranty is the presentation of the warranty card signed by the manufacturer and a description, photos or video of the failure
- The warranty card includes, among others machine serial number, date of sale, buyer data, manufacturer's company



signature. (take care of the condition of the aforementioned document - illegibility of the document excludes the warranty)

- Damaged parts should be sent to the service (parts of the device belong to PPHU Ritter Michał Rycerz).
- Any damage caused knowingly by the user is not the responsibility of the manufacturer.
- The manufacturer is not responsible for damage caused by a natural disaster (storm, lightning, hail, etc.), random accidents, improper use and incorrect operation.
- The manufacturer is not responsible for damage in transit
- The manufacturer is not responsible for damage caused by use by players (scratches, bumps, dents, bends, etc.)
- Replacing parts in the device does not extend the warranty period (the warranty covers all free repairs / replacements for a period of 1/2 years, depending on the above-mentioned).
- The manufacturer is not responsible in any way for the time when the device is not functioning during the warranty period.
- The manufacturer is not responsible in any way for damage to property or personal damage caused by improper use of the device.
- The warranty covers a device that has not been modified or has not been repaired by itself without consulting the PPHU Ritter Michał Rycerz service.
- The warranty covers only the buyer of the device (continued sale excludes the warranty granted for the machine)
- The manufacturer has the right to refuse to repair under the warranty if the customer has outstanding payments with the manufacturer
- The warranty covers the following:
 - - Electronics
 - - Displays
 - - Mechanisms
 - - Coin acceptor
 - - Wiring
 - - Defects arising in the technological process



Przebieg napraw gwarancyjnych

Ritter

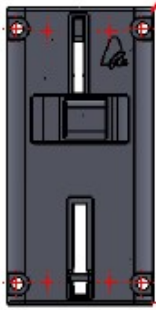
Data zgłoszenia	Data naprawy	Opis naprawy	Podpis



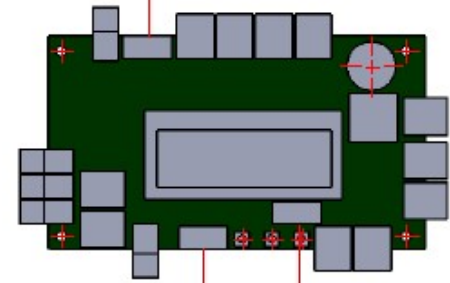
6. Mainboard settings

Menu JB6 - to enter the MENU - hold the middle button on the mainboard and then enter the code (0000) confirming with the middle button					Comments	
1	Game time	02:00			game time	
2	Start/impulse	2			after how many smallest coins to start the game	
3	Coin/impulse	0,5			value of the smallest coin	
4	Bonus coin	Bonus : 1 Impulse 4 Credit 1	Bonus : 2 Impulse 0 Credit 0	Bonus : 3 Impulse 0 Credit 0	Bonus : 4 Impulse 0 Credit 0,00	bonus number after how many impulses credit value added by the bonus
5	Free play	Inactive			free play	
6	Demo	10 min			how long does it take to play music "demo"	
7	Tickets	Credit/Ticket 1 Points/Ticket 10 NO/YES			for how many of points the ticket active/inactive tickets	
8	Off gates	15 sec			time to count points when finished	
9	Equalizer	Normal			korektor dźwięku	
10	Date	"2021-01-01"			date	
11	Clock	"10:00:00"			time	
12	Schedule	NO/YES			mainboard on / off schedule	
13	Motor	Power 70% Delay 5s Revers 0,02s On Motor			engine power (ball ejection mechanism) engine standstill time after which "reverses direction" will start reverses direction - motor reverse movement time manual movement of the mechanism right / left	
14	Clear counts	NO/YES			resetting counters	
15	Change code	Change code 0***			Change code	
16	Language	Polski				
17	Exit				exit (acceptance of introduced changes)	

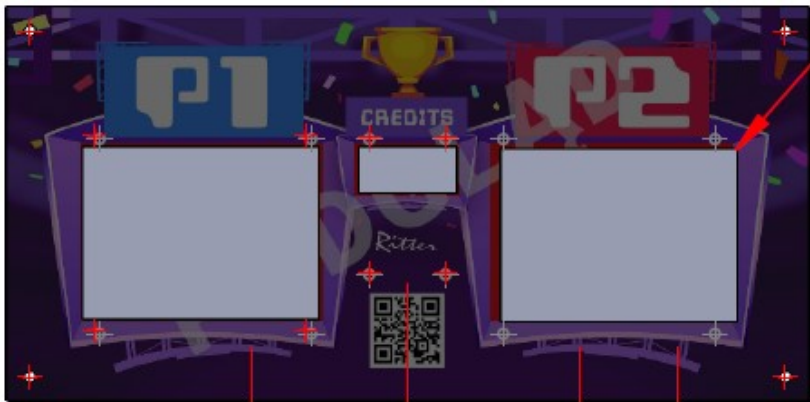
Coin



1



Displays



2

3



Remote Control

